

HUAHENG



TIG Track Orbital Welding System

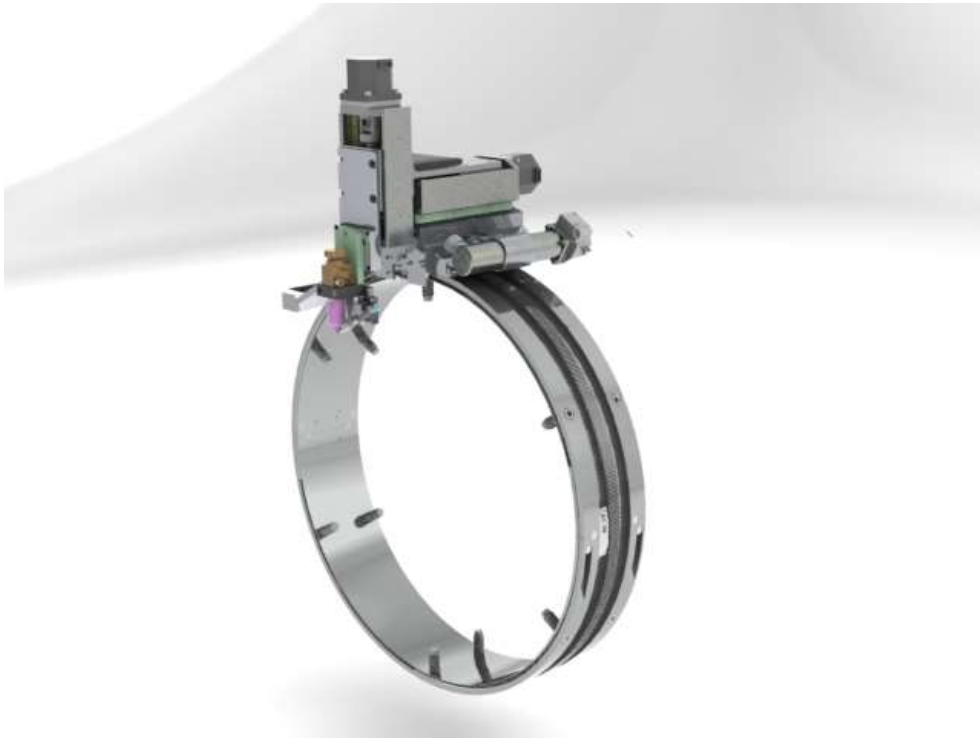
— AutoCar TIG

地址：江苏省昆山市博士路1588号 邮编：215347
Add: No.1588 Boshi Road,Kunshan,Jiangsu,P.R.China. PC: 215347
Tel: 0512-81866666 Fax: 0512-57328188
www.huahengweld.com E-mail: info@huahengweld.com

HUAHENG

HUAHENG

AutoCar System



地址：江苏省昆山市博士路1588号 邮编：215347
Add: No.1588 Boshi Road, Kunshan, Jiangsu, P.R.China. PC: 215347
Tel: 0512-81866666 Fax: 0512-57328188
www.huahengweld.com E-mail: info@huahengweld.com

HUAHENG

Features

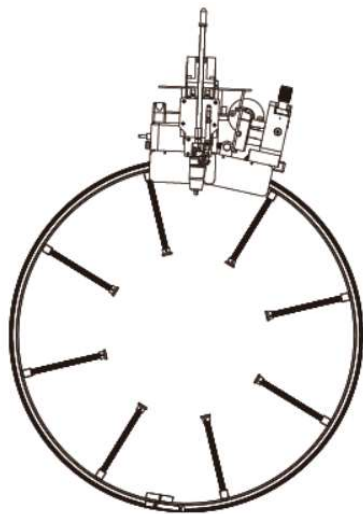
1. 6-axis functional control (Gas, Current, Rotation, Wire feeding, AVC, OSC).
2. Low skill requirement on operator;
3. High efficiency, high productivity;
4. Using double water cooling torch for big OD and thick wall pipe welding;
5. Aesthetic formation, even weld width;
6. Stable wire feeding based on a short wire feeding distance designed structure;
7. Few consumable parts and easy to replace, save considerable amount of investment.

Workpiece Range

Pipe OD: $\varphi 250\text{mm} - \varphi 830\text{mm}$

Pipe Thickness: $3\text{mm} - 20\text{mm}$

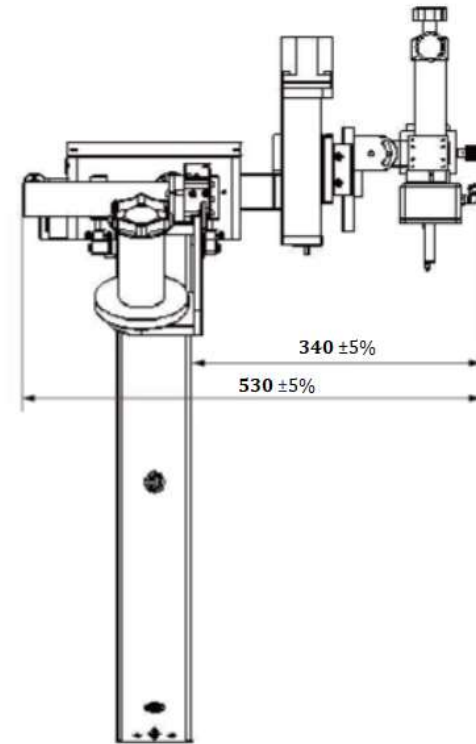
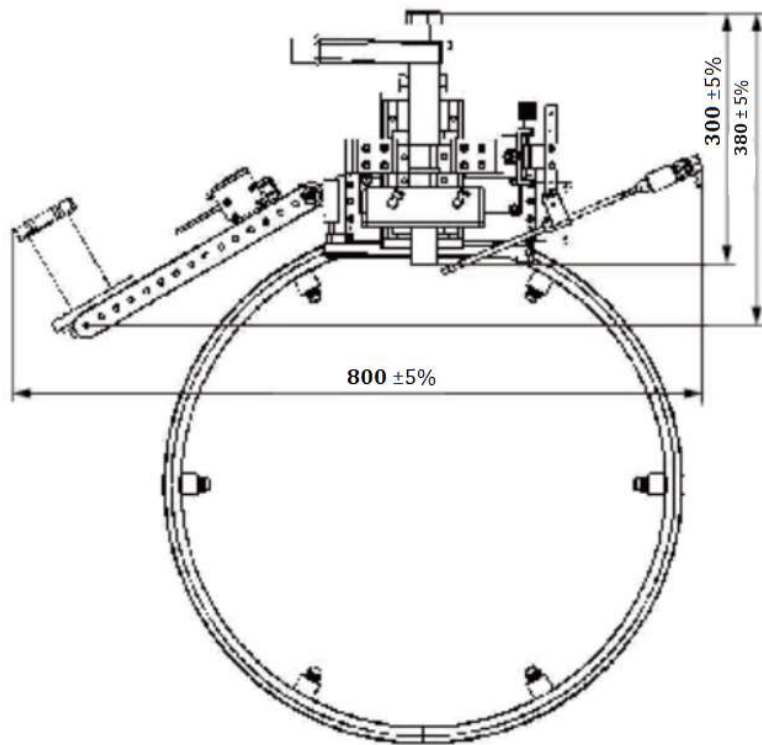
3 standard types of Puller Bolt:
50mm/78mm/106mm length



Item	Dimens	Desc
TIG AutoCar	TIG autocar system	S \leq 20mm; Cold Wire
Powersource	iOrbital 5000K	
Orbital Track	14" (OD 450mm)	Applicable Pipe OD Range: 250mm-350mm Puller Bolt Length: L=50 (290mm-350mm) L=78 (250mm-290mm)
Orbital Track	20" (OD 600mm)	Applicable Pipe OD Range: 350mm-500mm Puller Bolt Length: L=50 (440mm-500mm) L=78 (380mm-440mm) L=106 (350mm-)
Orbital Track	26" (OD 750mm)	Applicable Pipe OD Range: 500mm-650mm Puller Bolt Length: L=50 (590mm-650mm) L=78 (530mm-590mm) L=106 (500mm-)
Orbital Track	32" (OD 930mm)	Applicable Pipe OD Range: 650mm-830mm Puller Bolt Length: L=50 (770mm-830mm) L=78 (710mm-770mm) L=106 (650mm-)

HUAHENG

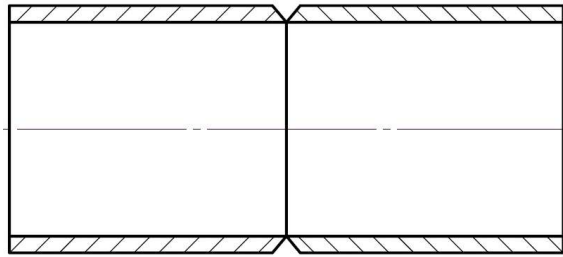
Dimension



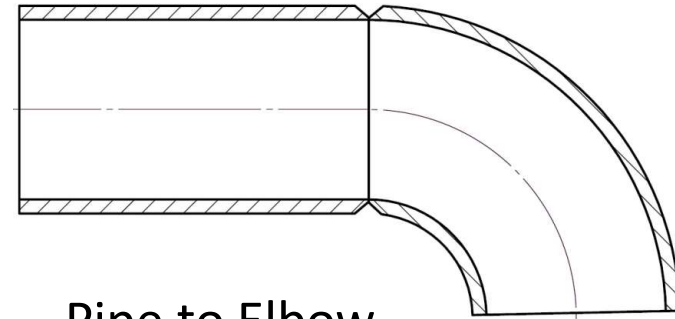
地址：江苏省昆山市博士路1588号 邮编：215347
Add: No.1588 Boshi Road, Kunshan, Jiangsu, P.R. China. PC: 215347
Tel: 0512-81866666 Fax: 0512-57328188
www.huahengweld.com E-mail: info@huahengweld.com

HUAHENG

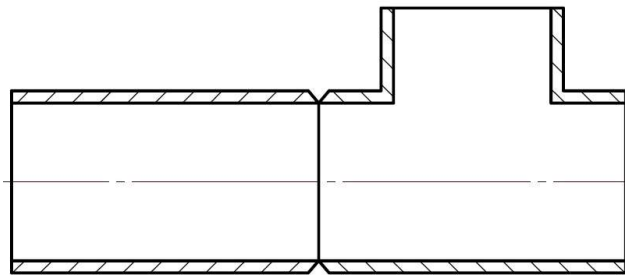
Joint Type



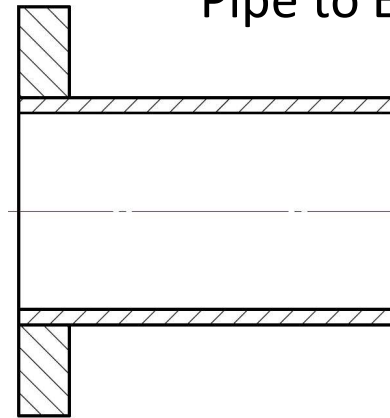
Pipe to Pipe



Pipe to Elbow



Pipe to Tee



Pipe to Flange

Others



Filler Wire:

Wight: 5kg

Diameter: φ 1.0mm

AVC/OSC:

AVC Stroke: 60mm

OSC Stroke: 60mm

