

TPN19

Inner Bore Orbital Weld Head

Summary

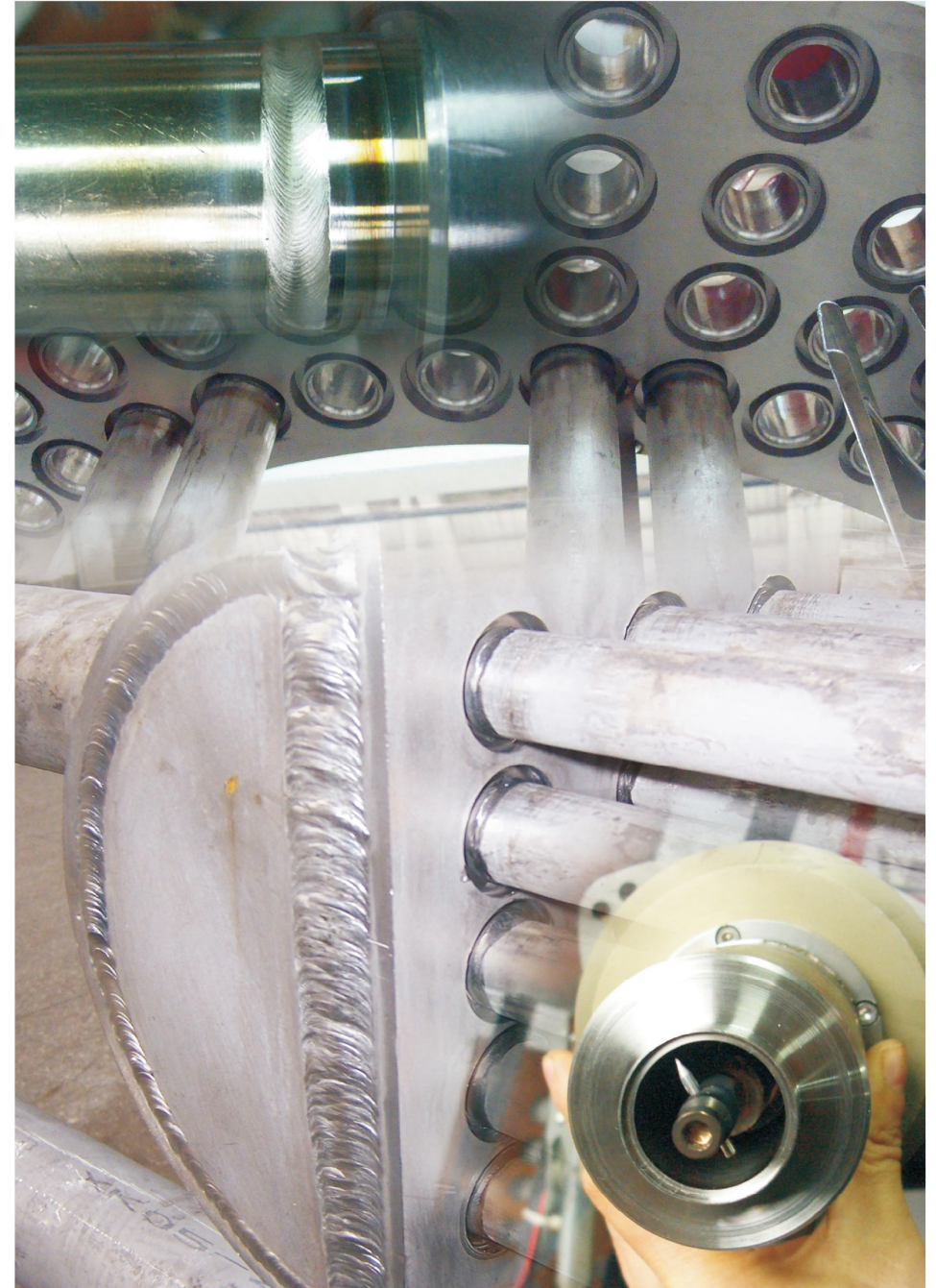
This weld head is special designed for tube/ tube sheet inner bore TIG welding. It can weld tube ID ≥ 19 mm carbon steel and stainless steel without wire feeding. It's compatible with Huaheng iOrbital5000 programmable digital welding power source to apply in chemical, food, medicine, heat exchanger, power plant, military and nuclear industries etc. to achieve precision TIG inner bore welding with high quality and repeatability.

Technical specification

Material	Carbon steel, stainless steel
Tube OD (mm)	$\geq \Phi 19$
Depth for Inner Tube (mm)	20 ~ 120
Tube thickness (mm)	1 ~ 2.5
Connection	Tube insert, flush tube
Tungsten diameter (mm)	$\Phi 2.4$
Rotation speed (rpm)	0.37 ~ 7.39
Arc adjusting distance (mm)	15
Protective gas	Ar
Cooling	Water
Cooling flow (ml/min)	≥ 300
Weight (kg)	11 (no cable)
Dimension(mm)	570 × 290 × 510

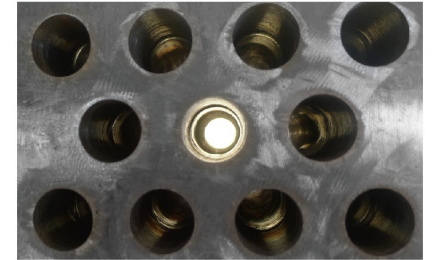
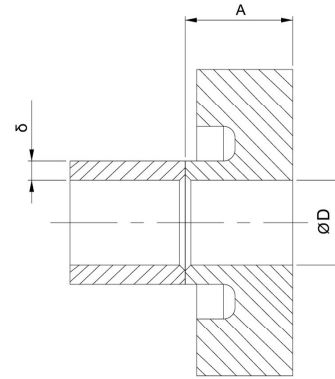
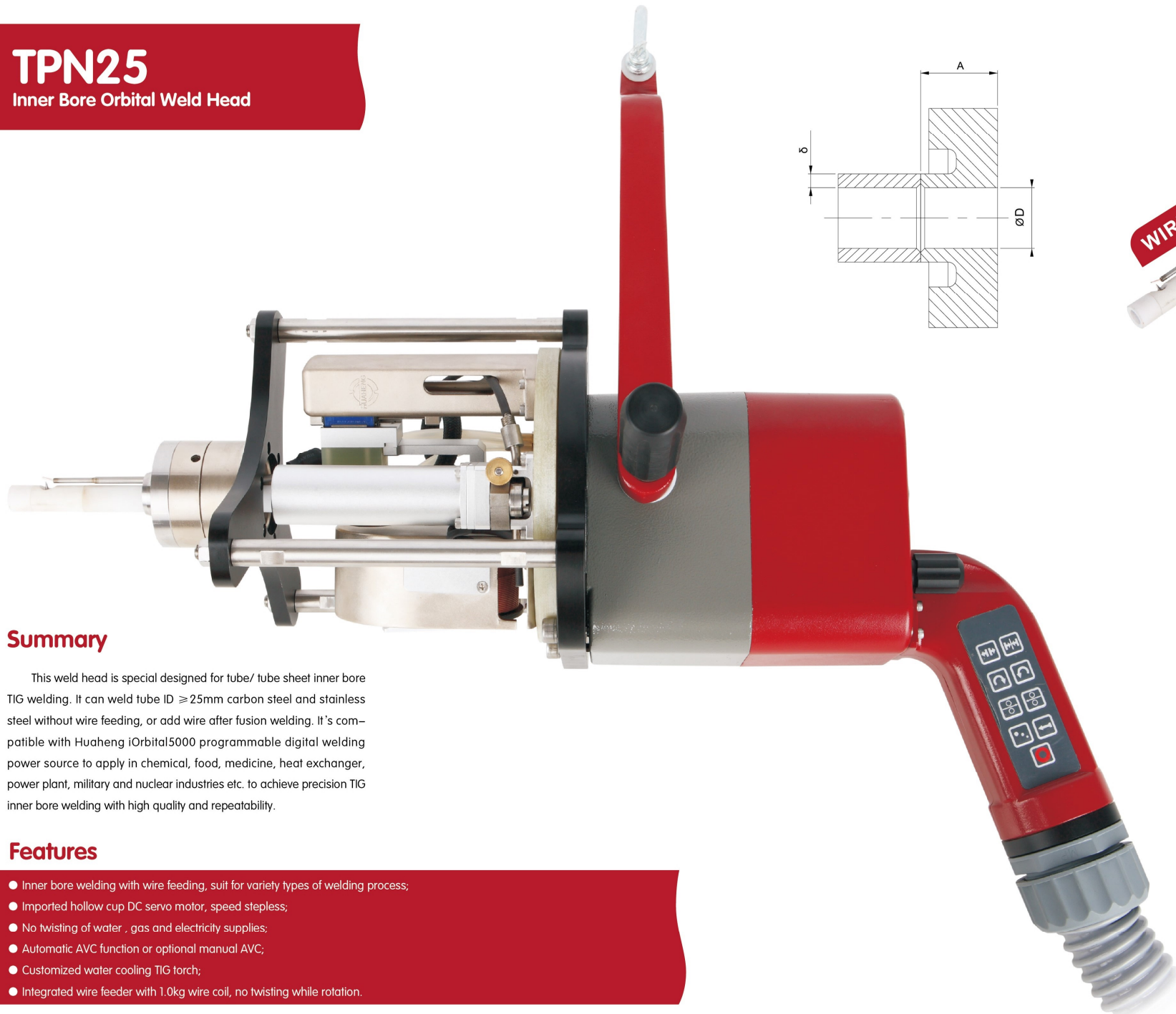
Features

- Suitable for the heat exchanger inner tube to tube-sheet welding in petrochemical industry;
- Minimum inner diameter of $\Phi 19$ mm;
- Precise positioning, easy for operation;
- Suitable for carbon steel and stainless steel;
- Customization according to specific requirements.



TPN25

Inner Bore Orbital Weld Head



Summary

This weld head is special designed for tube/ tube sheet inner bore TIG welding. It can weld tube ID ≥ 25 mm carbon steel and stainless steel without wire feeding, or add wire after fusion welding. It's compatible with Huaheng iOrbital5000 programmable digital welding power source to apply in chemical, food, medicine, heat exchanger, power plant, military and nuclear industries etc. to achieve precision TIG inner bore welding with high quality and repeatability.

Features

- Inner bore welding with wire feeding, suit for variety types of welding process;
- Imported hollow cup DC servo motor, speed stepless;
- No twisting of water , gas and electricity supplies;
- Automatic AVC function or optional manual AVC;
- Customized water cooling TIG torch;
- Integrated wire feeder with 1.0kg wire coil, no twisting while rotation.

Technical specification

Material	Carbon steel, stainless steel
Tube OD (mm)	$\geq \phi 25$
Depth for Inner Tube (mm)	20 - 80
Connection	Tube insert, flush tube
Tungsten diameter (mm)	$\phi 2.4$
Rotation speed (rpm)	0.37 ~ 7.39
Arc adjusting distance (mm)	15
Max wire feeding speed(mm/min)	1800
Tungsten diameter(mm)	$\phi 0.8$
Protective gas	Ar
Cooling	Water
Cooling flow (ml/min)	≥ 300
Weight (kg)	12(no cable)
Dimension(mm)	570 x 290 x 510